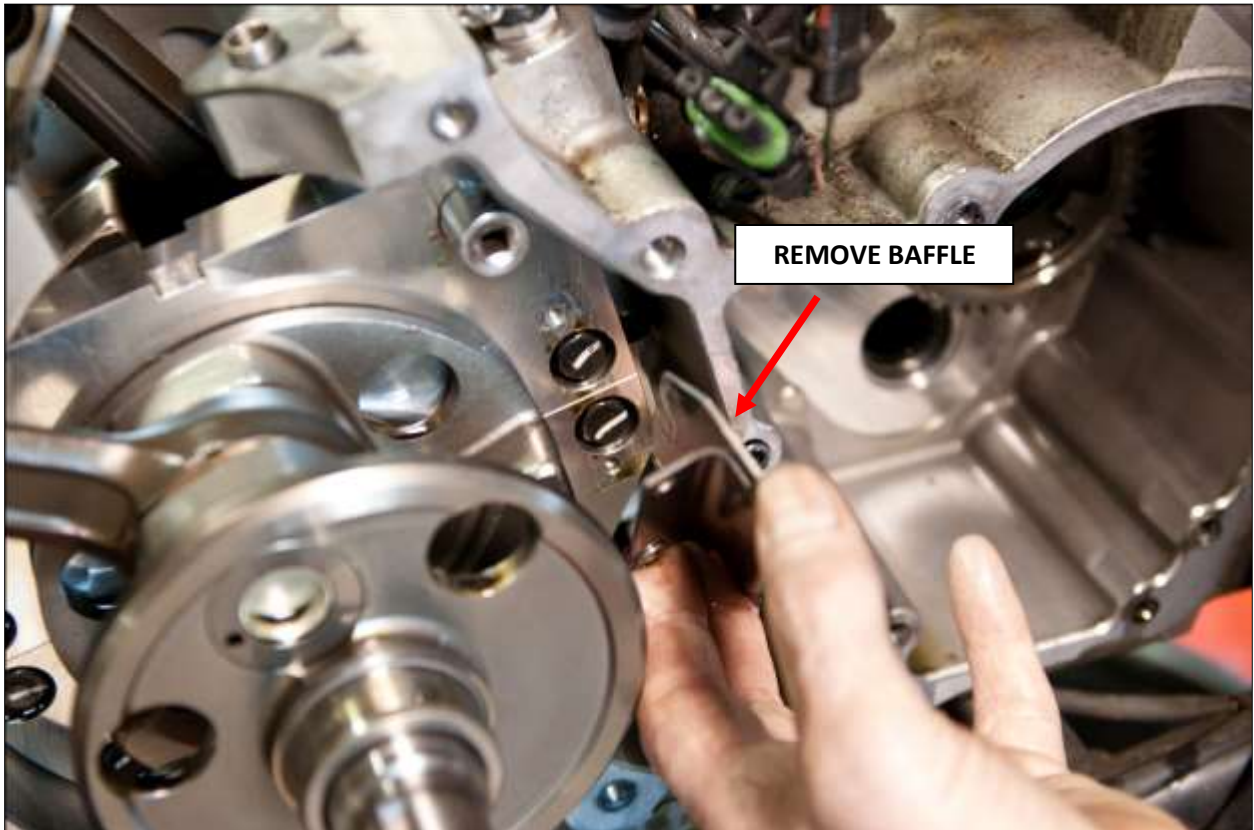


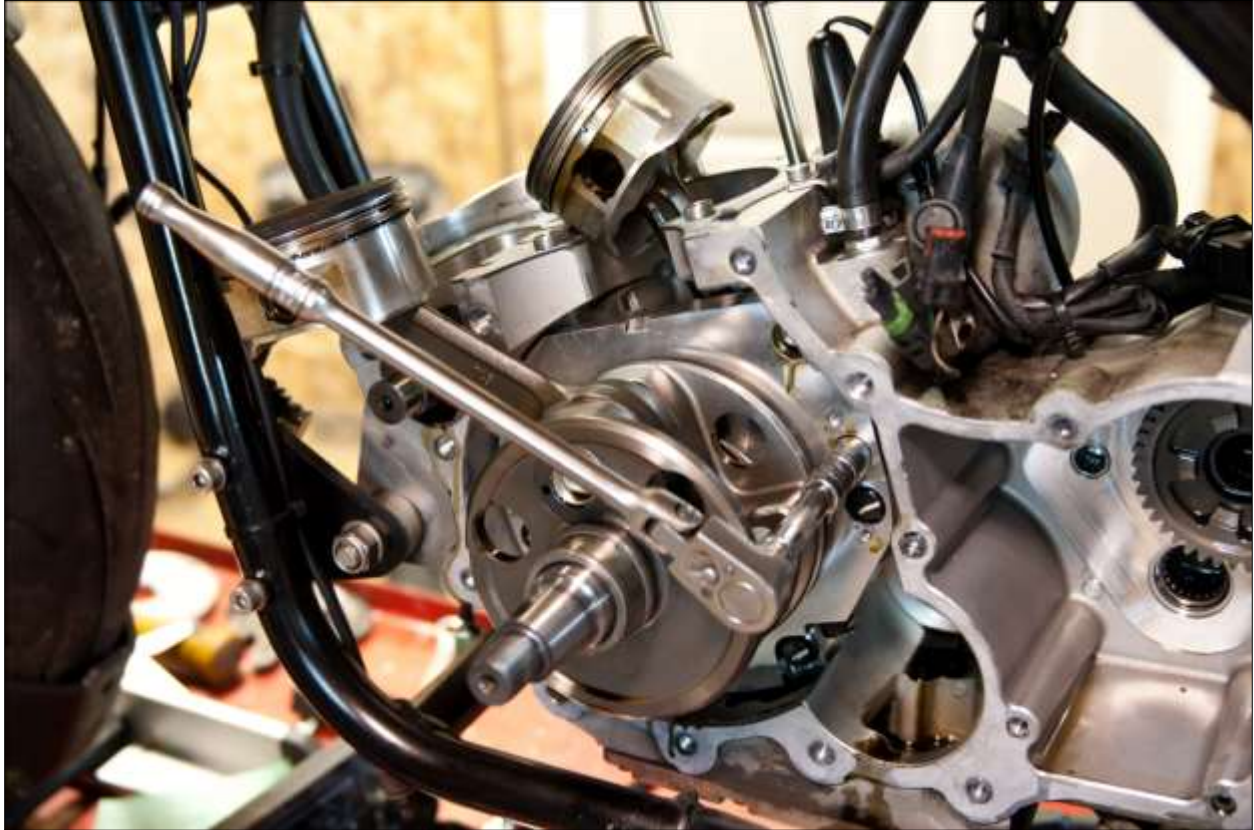


This section shows how to remove your Crank

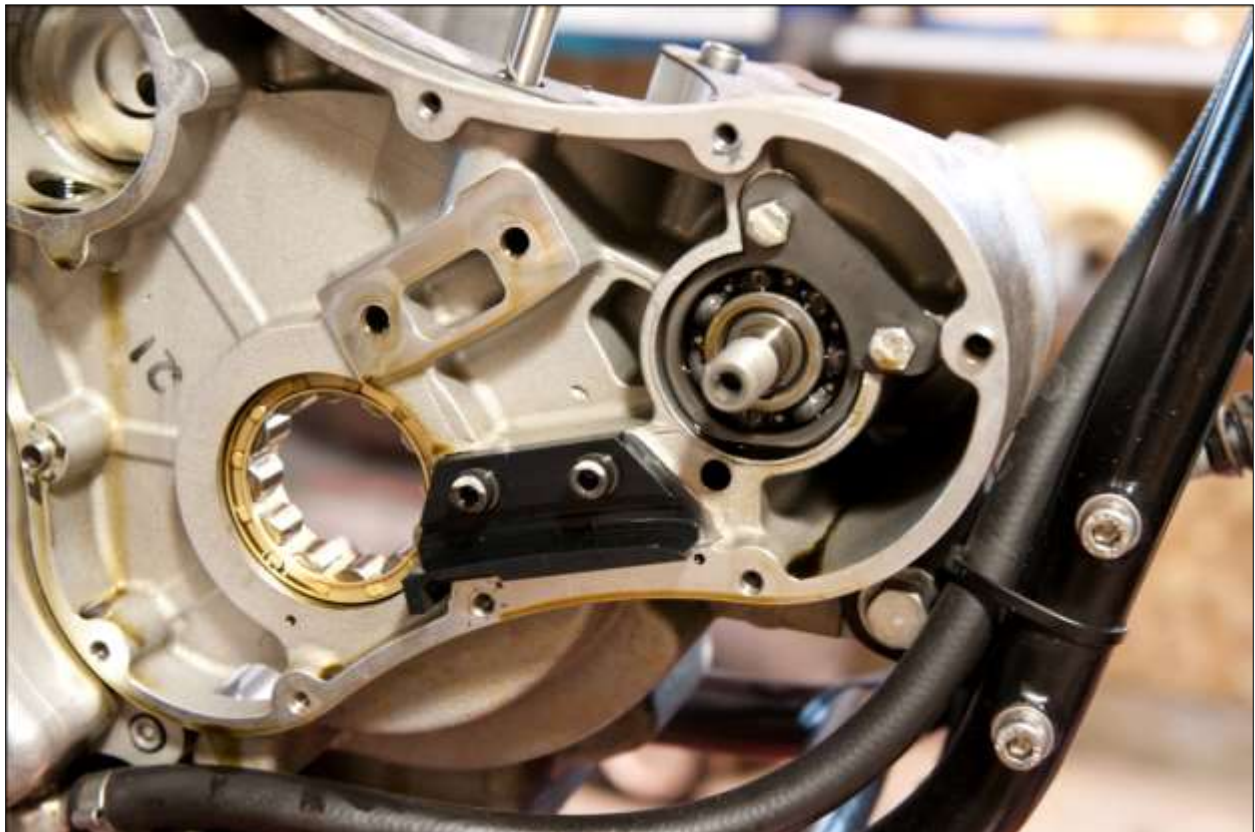
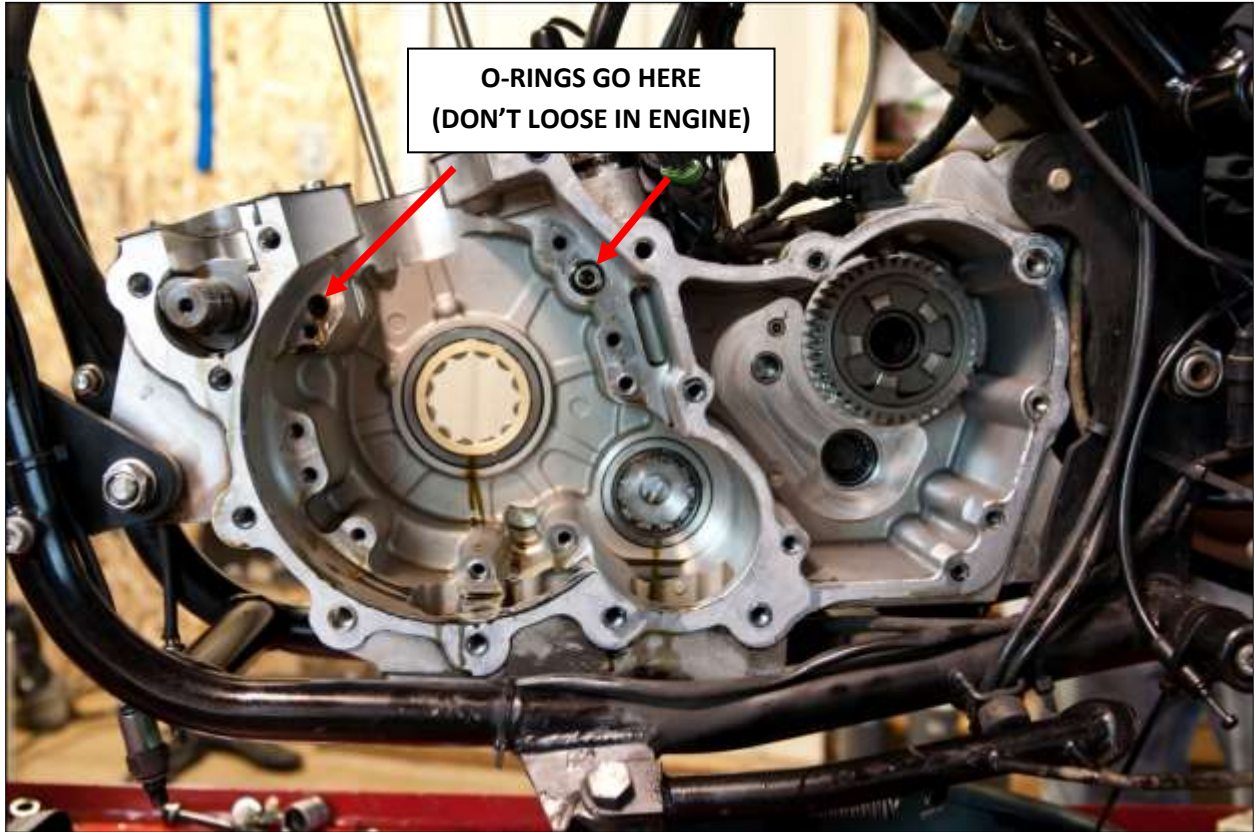
About as "in-depth" as the 961 motor gets. Please refer to my other manuals to get to this point.













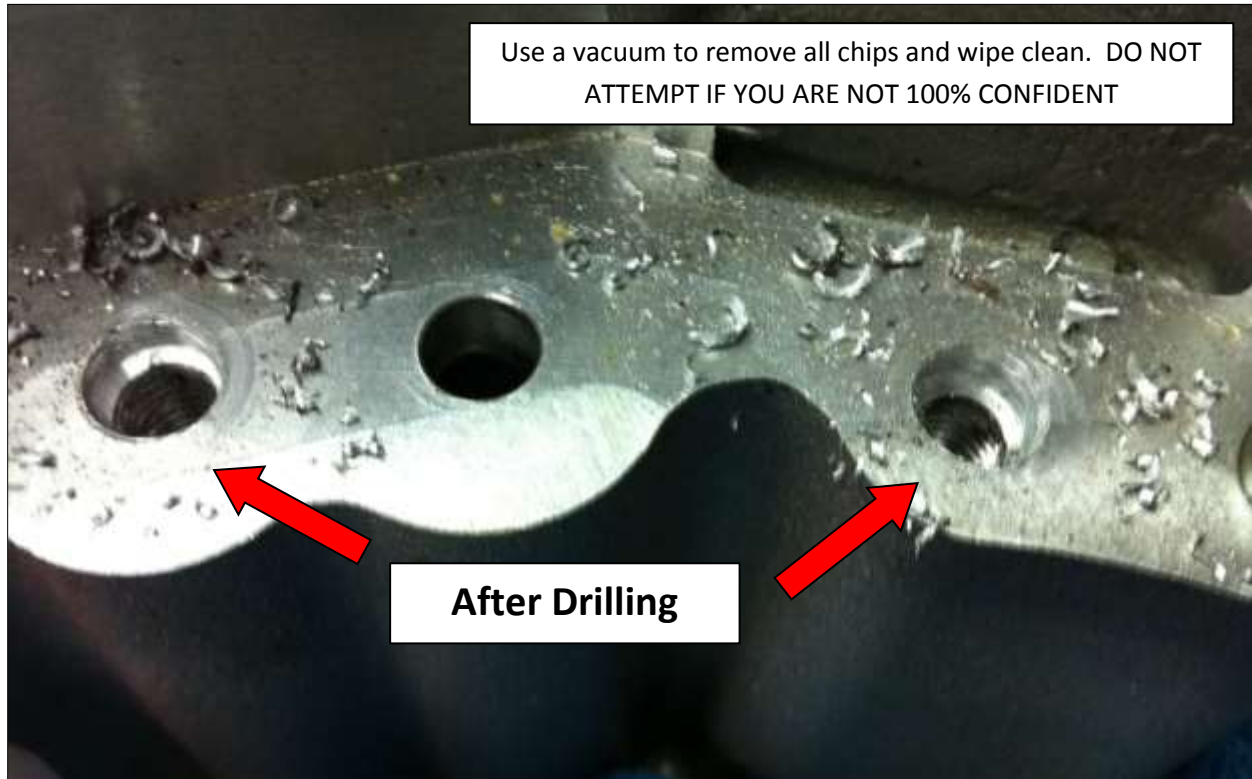
This is very important. This may not be on a lot of engines but we have seen it on a few between model yr 2013-2015. If it happened once, then it could possibly be on more engines. The Counter Bore depth is too deep in the crank center support housing or the shoulder is too long on the bolt. Either way, the crank is not tight against the case in this scenario. The bolt will torque up but the mounting face could have a slight gap. If you see this, follow the instructions below to correct it. If you do not understand this concept, please seek a professional's opinion.



Install a rubber sleeve over a $\varnothing 8\text{mm}$ (5/16") drill to expose the drill to only be able to drill a 3/16mm deep hole.



Drill the required holes in the case where interference is an issue. Cover the bearings and any voids that chips can get into. Use a vacuum to remove all chips and wipe clean. DO NOT ATTEMPT IF YOU ARE NOT 100% CONFIDENT



Check that ALL oil passages are clear and functional by gently blowing air through the holes and checking the opposite ends.



Always use NEW O-Rings and assemble with Loctite then torque to factory specs.

Although this guide doesn't have a price tag it is copyrighted and formally registered. If you like what you see and this has helped you, please make a donation via **PAYPAL** to **richard@coote1.com**. Your support will help make more manuals like this available.

If you haven't helped yet, please donate so I can continue to offer these guides.

We are slowly developing useful tools to help make it easier for you to work on your pride and joy. Specialty hand crafted tools for your modern Norton by **One07 Tools**, can be purchased from places like **Colorado Norton Works in the USA**. If there are any tools in this manual or other manuals you would like more information on, please email me at **richard@coote1.com**



Dave Coote's SE#107 at Port Dover June 13, 2014. Port Dover is a small town in Ontario Canada that attracts bikers every time the date is Friday the 13th. Since 1981, Tens of thousands visit whether rain, shine, snow or ice. Each date, Police enforce a rule that no cars are allowed into the town. It's something that should be experienced at least once. In recent years, summer month dates draw 150,000+ bikes that visit the town in one day.