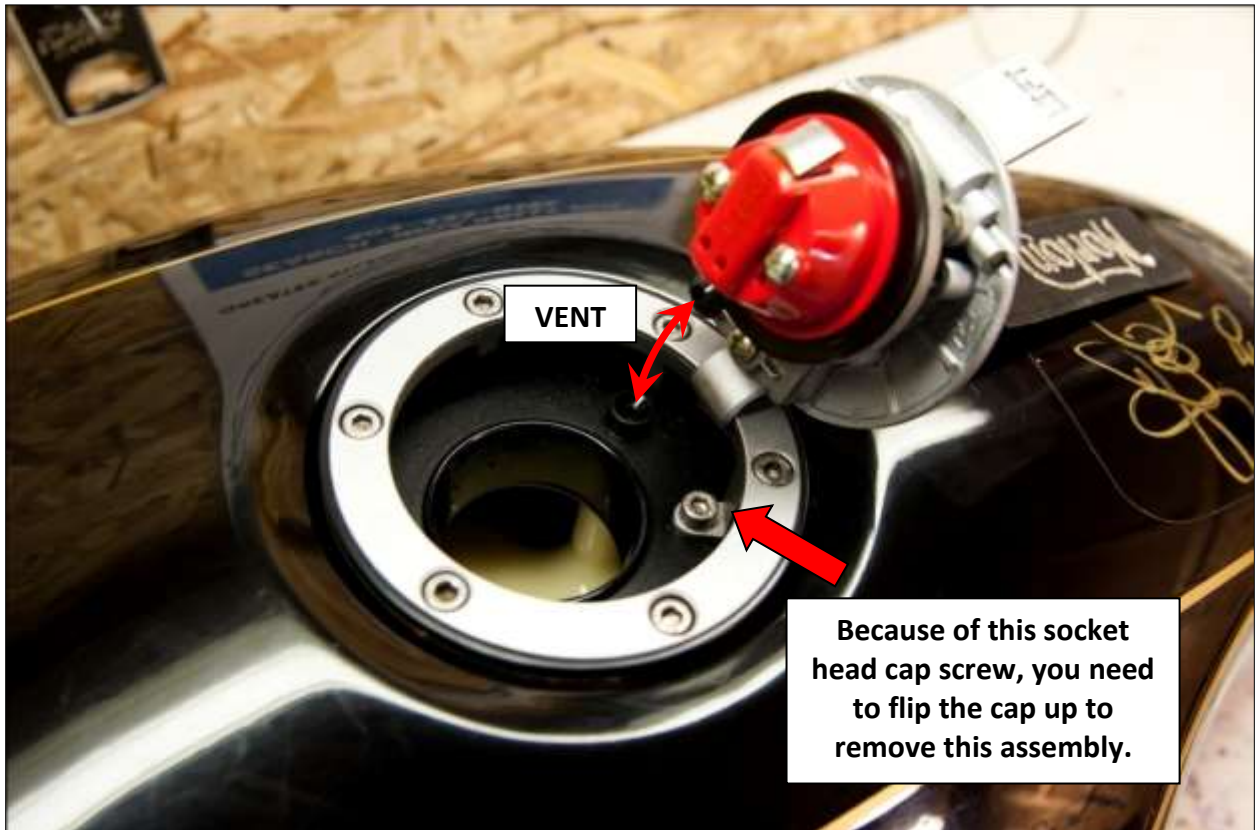


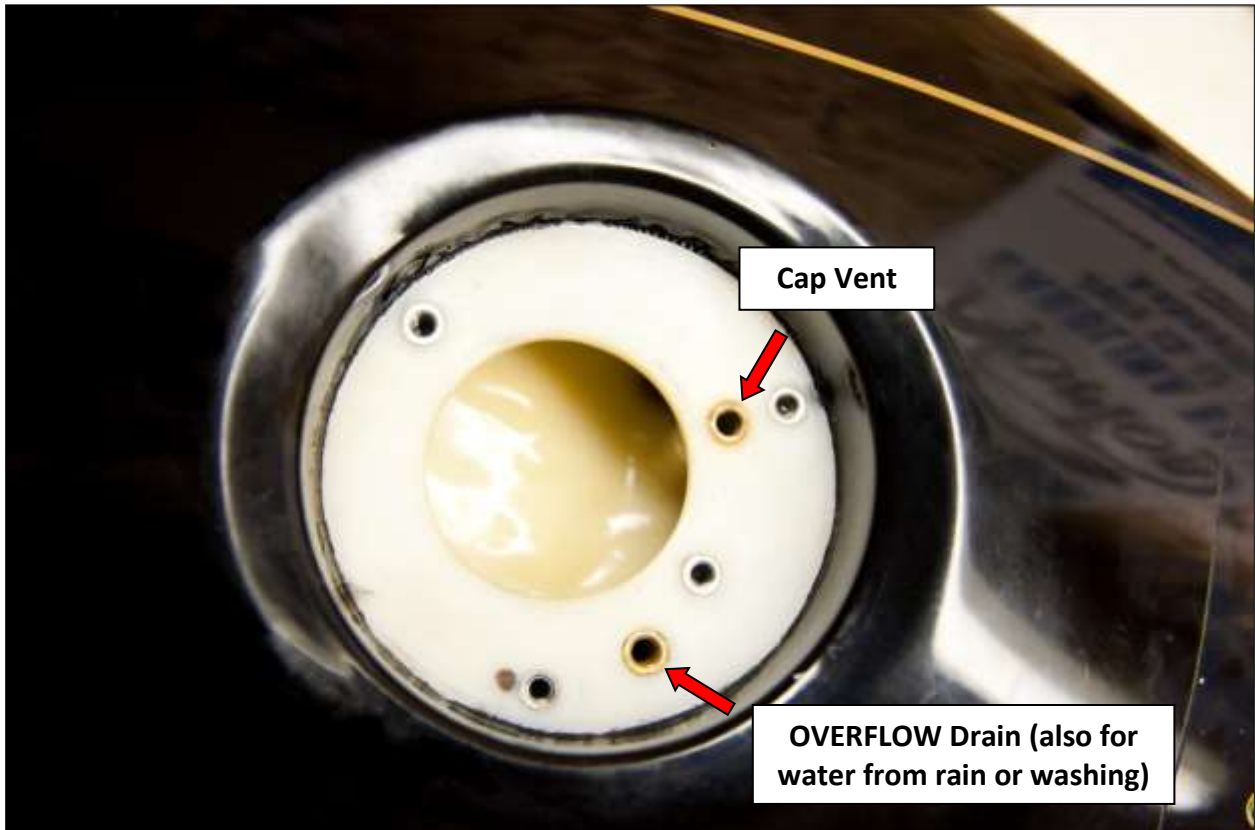
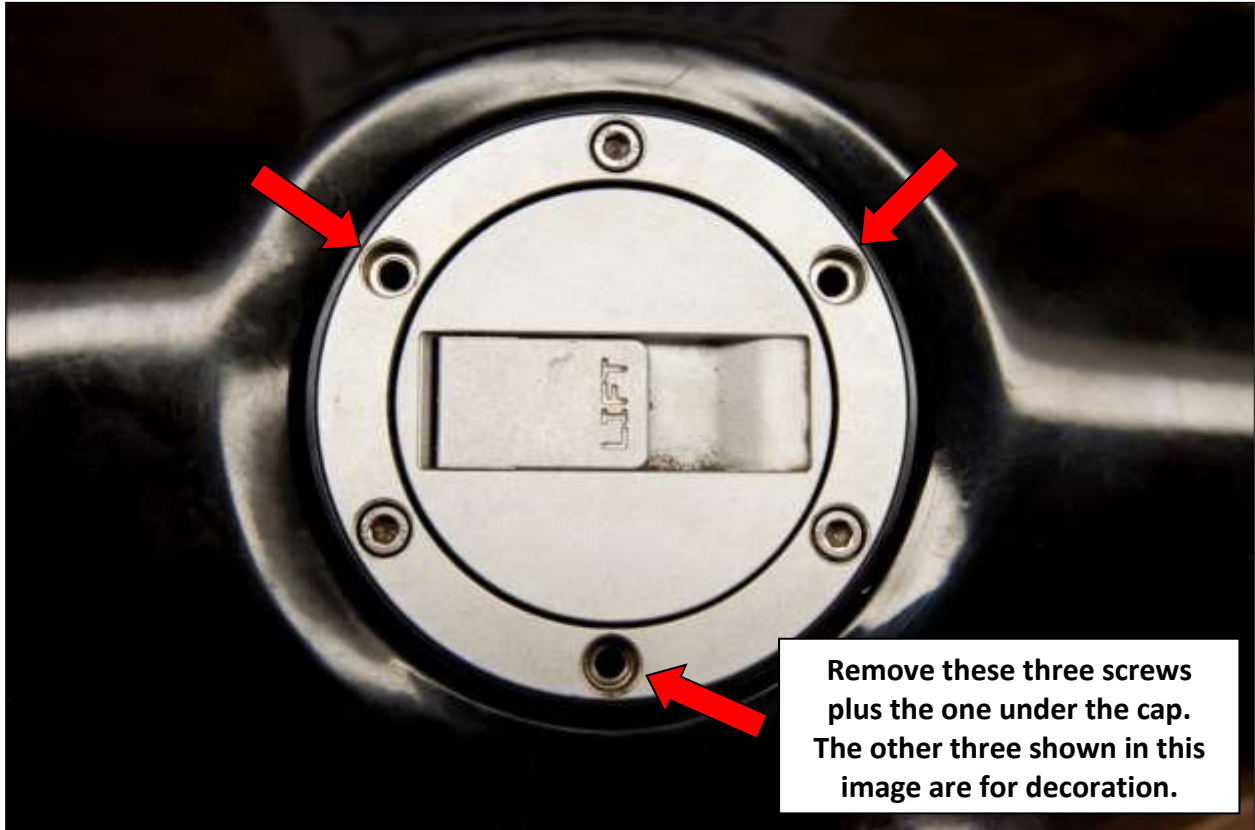


This section shows Commando Fuel Pump and Cap removal

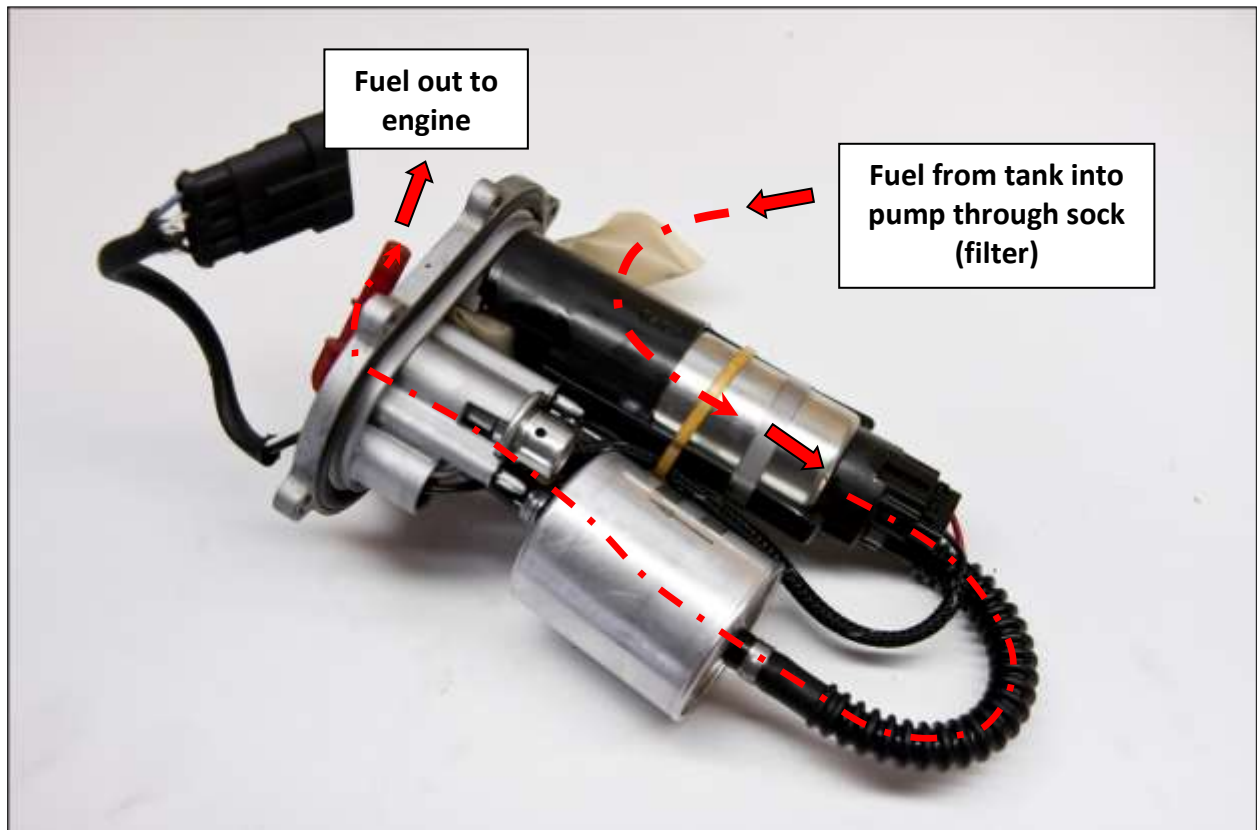
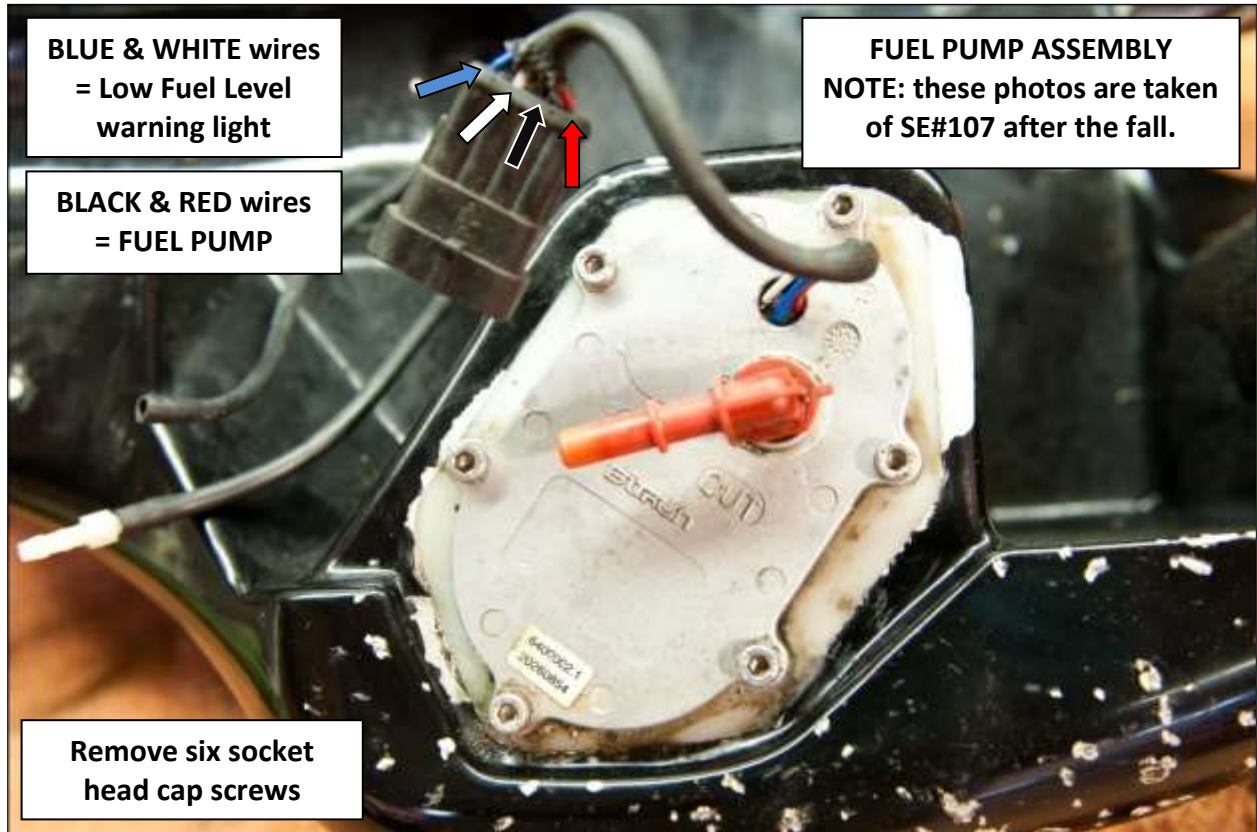
Also refer to MANUAL > Fuel Tank Removal - Norton 961

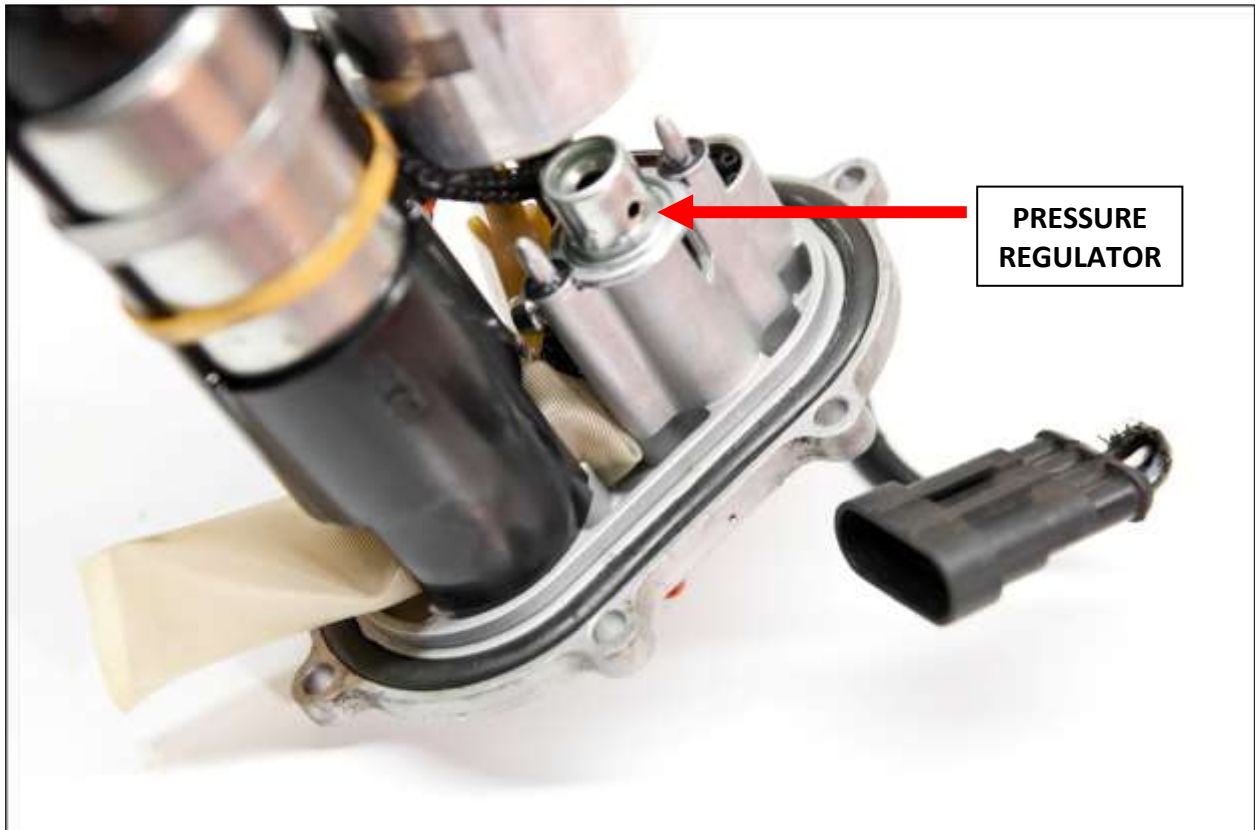
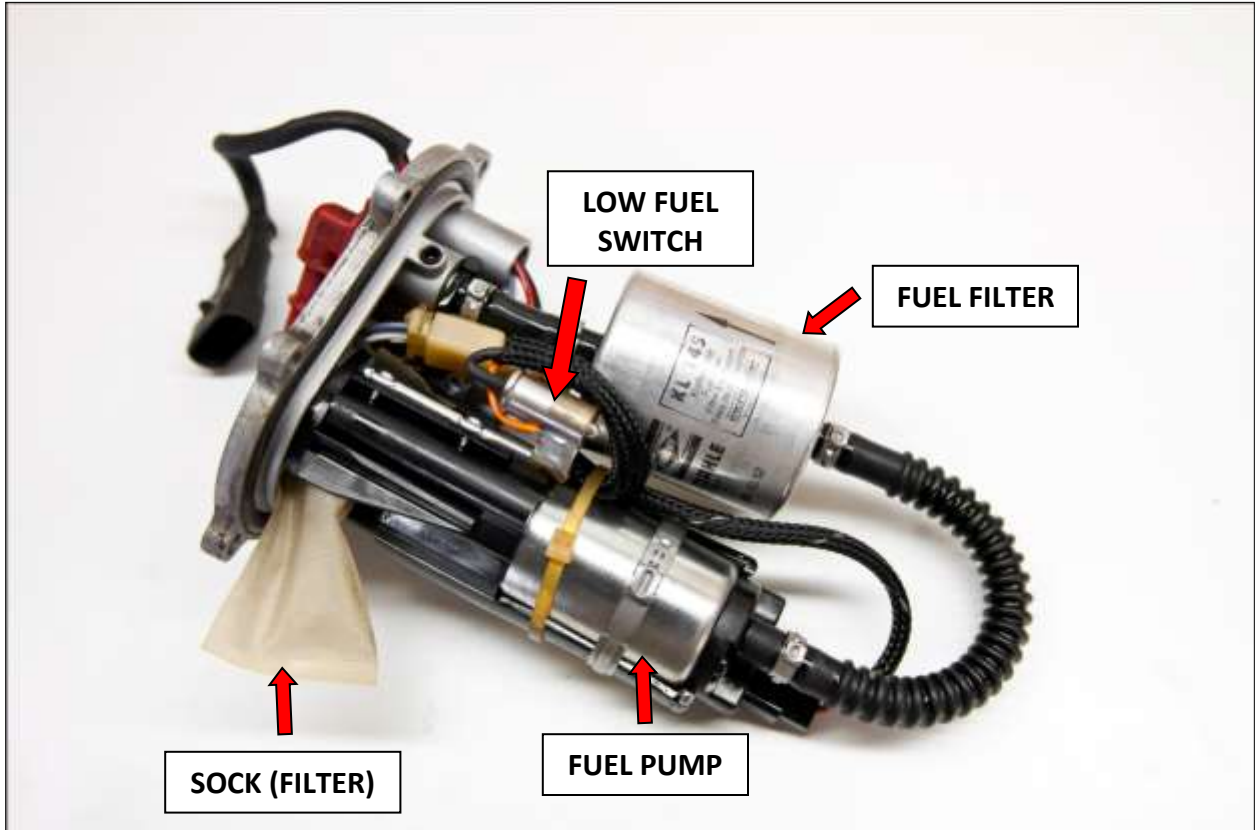






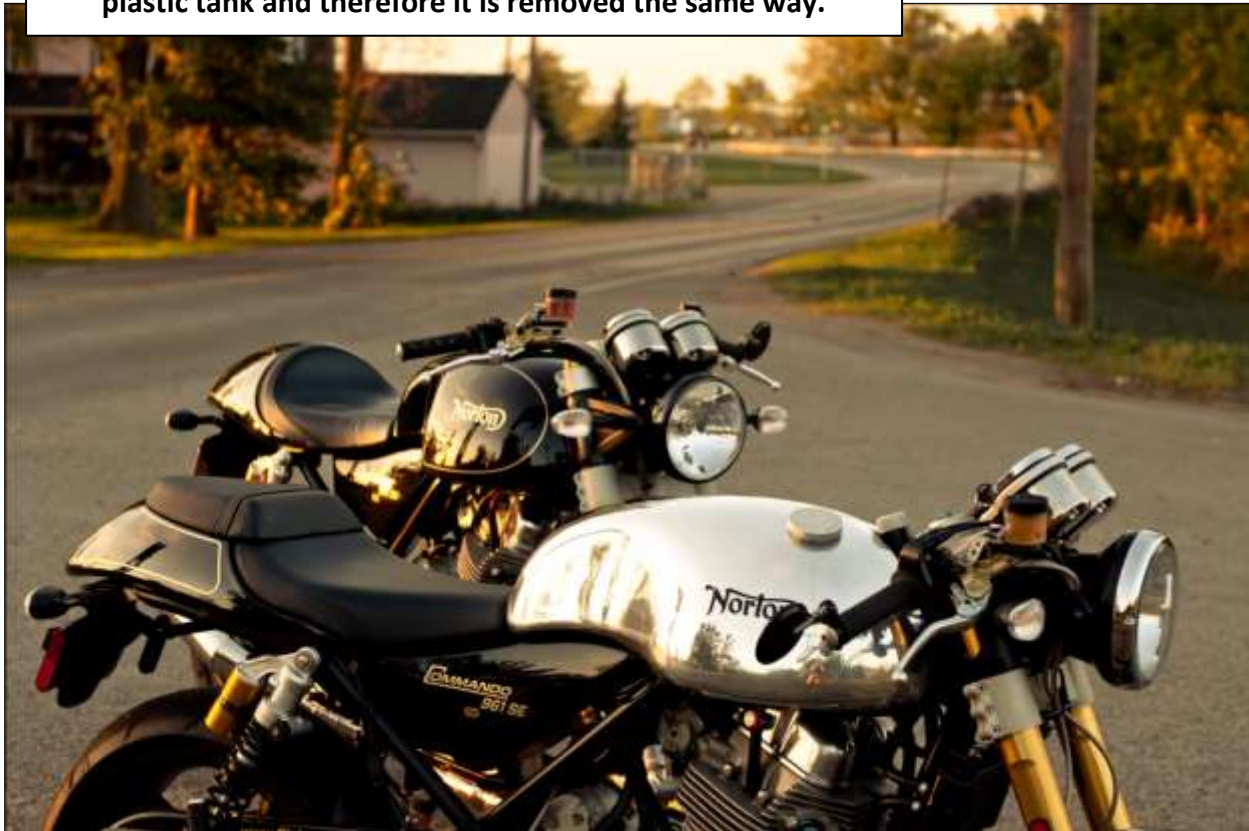








NOTE: The Aluminum tank uses the same fuel pump and the plastic tank and therefore it is removed the same way.



Although this guide doesn't have a price tag it is copyrighted and formally registered. If you like what you see and this has helped you, please make a donation via **PAYPAL** to richard@coote1.com. Your support will help make more manuals like this available.

If you haven't helped yet, please donate so I can continue to offer these guides.

We are slowly developing useful tools to help make it easier for you to work on your pride and joy. Specialty hand crafted tools for your modern Norton by **One07 Tools**, can be purchased from places like **Colorado Norton Works in the USA**. If there are any tools in this manual or other manuals you would like more information on, please email me at richard@coote1.com



SE#107 (left) and SE#112 (right) TOWN MOTO TORONTO for the 2016 Mods & Rockers Event



SE#112 (left) and SE#107 (right) stop on the way home from 2016 Mods & Rockers Event